

AMANUS MOUNTAIN

SE - Turkey (Dörtyol Region)

Ecological Map

prepared by the research project



Author: H. Kehl

Vegetation Units

GROUP A: I II Marrubium globosum units

oral to sub-alpine belt (incl. tree-border-line) with pronounced differences between northern and southern slopes

- 1 A-1 Eremurus - Paracaryum (S-Exposition)
- 2 A-2 Marrubium globosum - Asperula pontica
- 3 A-3 Marrubium globosum with Vincetoxicum tmoleum
- A-4 Abies cilicica dominant (S-Exposition)
- A-5 Abies cilicica + Pinus nigra ssp. pallasiana (S-Exposition)
- A-6 Eremurus - Paracaryum - with Abies (S-Exposition)

GROUP B: I II Fagus orientalis units

montane frost-resistant moist forest with Fagus orientalis (dominant) and Pinus nigra ssp. pallasiana

- 11 B-1 Fagus orientalis (dom.) with Quercus cerris
- 12/3 B-2 Fagus orientalis absolute dominant
- 2 B-3 Pinus nigra ssp. pallasiana (dom.)
- 3.1/2 B-4 Fagus (dom.) with Pinus nigra ssp. (codom.)
- 3.3 B-5 Fagus (dom.) with Carpinus orientalis

GROUP C: I II Quercus cerris units

sub-montane very moist deciduous forest with Quercus cerris (dom.) and Carpinus orientalis (codom.)

- 1.1.1 C-1 Quercus cerris (dom.) with Erica manipuliflora
- 1.1.2 C-2 Quercus cerris with Erica manipuliflora and Pinus nigra ssp.
- 1-2 C-3 Quercus cerris dominant
- 2 C-4 Quercus cerris and Carpinus orientalis
- 3.1 C-5 Quercus cerris - Carpinus - Styxax - mixed forest
- 3.2 C-6 As unit C-5, but Quercus cerris (dom.) with Pinus brutia
- C-7 Quercus cerris, Qu. petraea ssp., Qu. coccifera with Carpinus ar
- C-8 Quercus spp. with Fagus orientalis and Pinus nigra

GROUP D: I II Laurus - Tilia units

sub-montane zone with intramontane very moist deciduous ravine forests with Tilia argentea and the evergreens Laurus nobilis, Taxus baccata, Ilex colchicum and Buxus sempervirens

- 1 D-1 Laurus - Carpinus - Fagus - mixed forest
- 2.1 D-2 Laurus - Carpinus - Buxus - mixed forest
- 2.2 D-3 Laurus - Carpinus - Lonicera etrusca -
- 3 D-4 Laurus - Platanus - ravine forest
- 4 D-5 Laurus - Fagus - Ostrya - Saxifraga cymbalaria - ravine forest

GROUP E: I II Carpinus orientalis units

colline to sub-montane Carpinus orientalis (dom.) - Quercus cerris - Styxax officinalis - deciduous forest with Pinus brutia (partly strong damaged)

- 1 E-1 Carpinus orientalis (dom.) - Styxax - Cornus - mixed forest
- 2 E-2 Styxax officinalis absolute dominant
- 3 E-3 Carpinus orientalis (dom.) with Cornus mas
- 4 E-4 Carpinus orientalis (dom.) - Laurus - Pinus brutia
- 5 E-5 Sophora jaubertii - Lagerflur

GROUP F: I II Pinus brutia units

colline to sub-montane Pinus brutia - Centaurea ptosimopappa - forest

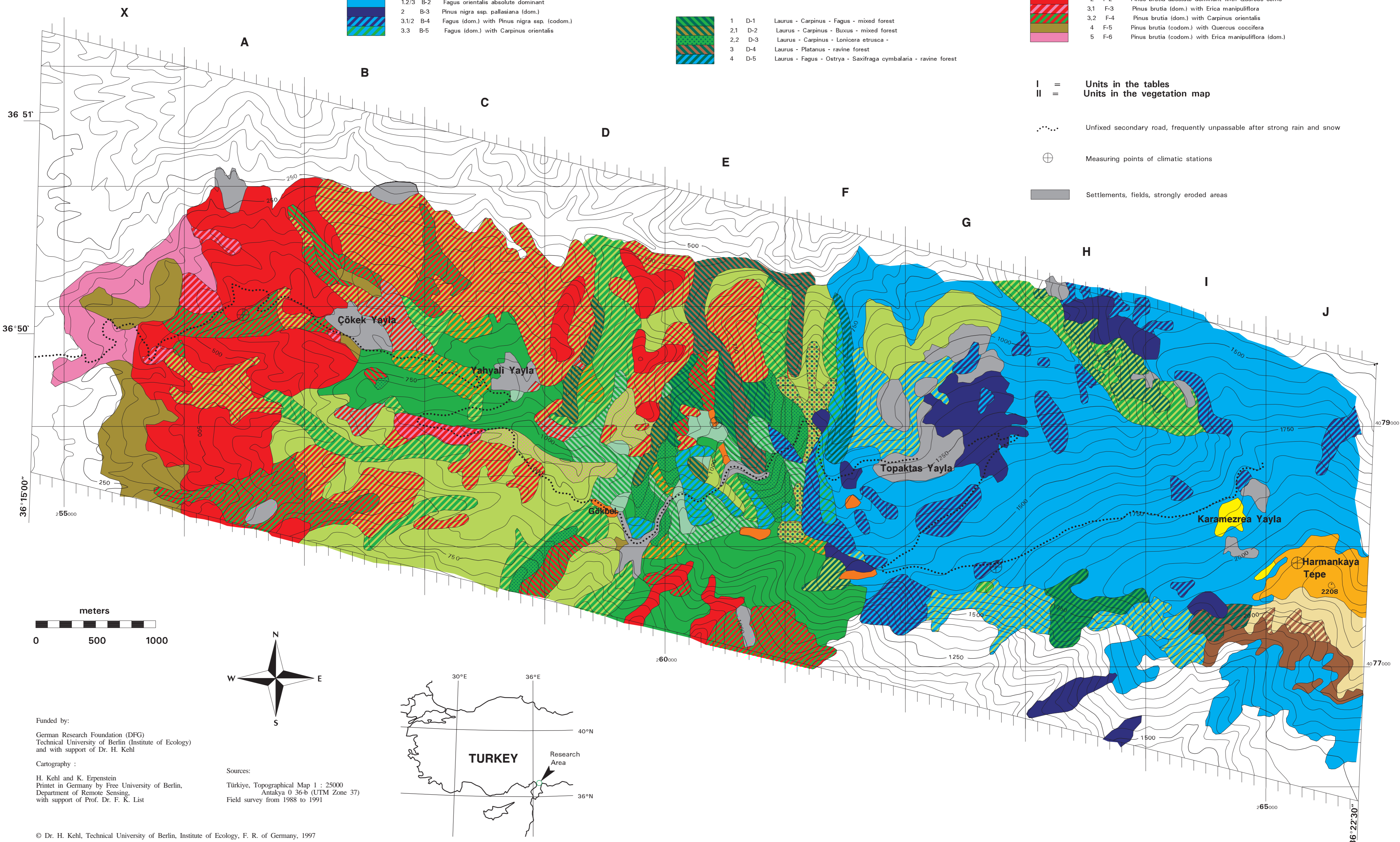
- 1 F-1 Pinus brutia (dom.) with Quercus cerris (codom.)
- 2 F-2 Pinus brutia absolute dominant with Quercus cerris
- 3.1 F-3 Pinus brutia (dom.) with Erica manipuliflora
- 3.2 F-4 Pinus brutia (dom.) with Carpinus orientalis
- 4 F-5 Pinus brutia (codom.) with Quercus coccifera
- 5 F-6 Pinus brutia (codom.) with Erica manipuliflora (dom.)

I = Units in the tables
II = Units in the vegetation map

Unfixed secondary road, frequently unpassable after strong rain and snow

Measuring points of climatic stations

Settlements, fields, strongly eroded areas



Funded by:
German Research Foundation (DFG)
Technical University of Berlin (Institute of Ecology)
and with support of Dr. H. Kehl

Cartography :
H. Kehl and K. Erpenstein
Printed in Germany by Free University of Berlin,
Department of Remote Sensing,
with support of Prof. Dr. F. K. List

Sources:
Türkiye, Topographical Map 1 : 25000
Antakya 0 36-b (UTM Zone 37)
Field survey from 1988 to 1991